

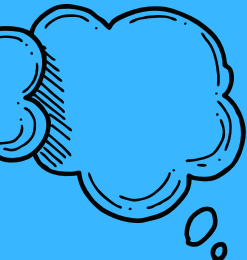


PTA – Info Booklet



FRIENDS OF NELSON





Bingo Nights
 With support from local businesses, donating some amazing prizes, our last 2 Bingo events have raised £1400!

Disco's
 We have held 2 discos, with another on the way soon. So far, we have raised almost £1800 and expect the discos to raise around £2500 in total by the end of Summer term!

Cake Raffles
 This year, each half term we have held a cake raffle. 1 winner from EYFS/KS1 and 1 winner from KS2 is picked on the last day of term! Since February, we have raised over £250!

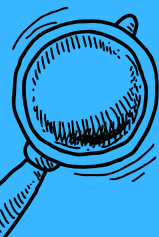
Events held this year.



Christmas Links
 This year, one of our fab members had a great idea to fundraise by creating a Santa's beard of paper chains! We raised £142 in just a week!

Refreshments
 Throughout the year, our Volunteers support in-house events such as Sports Day, Theatre Club Performances & the yr6 Leavers Assemblies to help raise vital funds.

Earth Day
 You showed up to support us on Earth Day by helping us raise £387 in just a few hours! This is a fabulous family day led by Mrs Boyes - we can't wait to be there again next year!





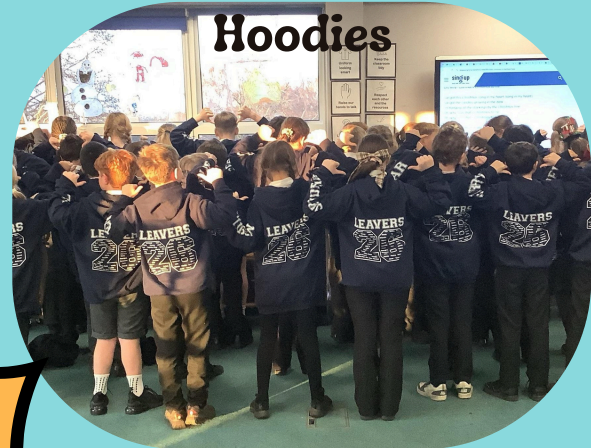
**Coaches to the Panto
for the whole School**



**Book Bags for new
Reception intake**



Year 6 Leavers



Purchases & Contributions

Here's an introduction to what some of our fundraising has gone towards.



**Nursery Christmas
Inflatable Party**



MC Grammar

This one was a special one!! Mrs Sek had a plan to make dreams come true and we just had to be a part of it!



**Coaches for school
trips**

(this might not seem like an exciting one, but it helps to keep parent contributions as low as possible!)



MEET THE TEAM



KELLY CLARKE - CHAIR



I initially joined FON to help raise money for our children whilst getting to witness first hand them enjoying the events we put on and the rewards of the money we raise.

More recently, I have stepped up to become Chair and I am looking forward to supporting the school in fundraising for a big ticket item that everyone can benefit from!

LISA FNINE - SECRETARY



I really enjoy being part of Friends of Nelson Academy because it brings together parents, staff and the wider community around a shared goal— supporting the school and enhancing the experience for all pupils with such a positive and collaborative group, It's a great way to meet others, get involved in school life, and play a small part in making a big difference for the children. Seeing the impact of events and fundraising efforts makes it especially rewarding.

SAM HADLEY - TREASURER

2 of my 3 boys attend Nelson so I joined FON because I wanted to join in with the positive environment that the school creates

It has been a great way to build relationships both with other parents and the school staff too. I love getting involved in different events; helping to raise funds that every child at the school benefits from and also helping to create that community feel.



ALI CUPIT - VOLUNTEER



I am a P.E teacher at Nelson Academy and have had 3 children that have attended Nelson Academy in the past. I have been involved with fundraising for the school over the last 16 years and it is amazing how FON and the school can get behind events and make it such a success. FON is a great way to get involved with the school and get to know parents and staff in an informal way.

GILL SEK - VOLUNTEER

My name is Gill Sekatawa - known as Mrs.Sek in school. I have been a member of some form of PTA for the length of my career enjoying working with parents and staff in fundraising shenanigans! I started at our school - when it was Clackclose - in 1995 & they only had a break from me for 5 years when I went to work at MEMPSchool in Lesotho. All three of my children attended Nelson and loved their time here. My husband Peter has also worked on many projects in our school including the murals.



EMILY CLIFTON - VOLUNTEER

I volunteer as I care about supporting the children and helping create a positive, enjoyable school environment. Being involved allows me to contribute to activities and events that bring excitement and fun to the students' everyday experiences.

It's really rewarding to see the children happy, engaged, and making great memories with their friends. At the same time, it gives my own children the opportunity to take part in a wide range of experiences that help them grow, build confidence, and feel more connected to their school community.



MEET THE TEAM



RACHEL HUNT - VOLUNTEER

I wanted to be involved in my local community and helping raise funds for the school my children attend seems a good way to do this.

I've enjoyed the volunteering so far and recently stepped down as Co-Chair. I look forward to future events put on by FON.



JADE CULEY - VOLUNTEER



DARREN VAN CAMPENHOUT - VOLUNTEER

I joined Friends of Nelson to help raise funds for the school. I'm passionate about supporting initiatives that gives Nelson pupils an exciting and enriching educational experience during their early years.



JULIE CRANE - VOLUNTEER



LOUISE PAGE - VOLUNTEER

I've been actively involved with fundraising for the last 10+ years at the schools/Pre-School settings my children have / are attending.

It's really important to me to fundraise for my children's schools because without the extra support from the fundraising; my children wouldn't have benefited from half the things they've been able to enjoy over the years.

It gives you a huge sense of satisfaction to see the children, teachers and parents enjoying the things that you've helped fund





Friend of Nelson PTA is always on the look out
for more volunteers.

As our fundraising efforts grow, we need our
committee to grow too. Interested in joining the
effort? We would love to hear from you!

You can email us at
friendsofnelsonacademy23@gmail.com

SCHOOL CALENDAR

2026-2027

2026-2027



September 2026						
M	T	W	T	F	S	S
	1	2	3	4	5	6
7	8	9	10	11	12	13
14	15	16	17	18	19	20
21	22	23	24	25	26	27
28	29	30				

October 2026						
M	T	W	T	F	S	S
			1	2	3	4
5	6	7	8	9	10	11
12	13	14	15	16	17	18
19	20	21	22	23	24	25
26	27	28	29	30	31	

November 2026						
M	T	W	T	F	S	S
						1
2	3	4	5	6	7	8
9	10	11	12	13	14	15
16	17	18	19	20	21	22
23	24	25	26	27	28	29
30						

December 2026						
M	T	W	T	F	S	S
	1	2	3	4	5	6
7	8	9	10	11	12	13
14	15	16	17	18	19	20
21	22	23	24	25	26	27
28	29	30	31			

January 2027						
M	T	W	T	F	S	S
				1	2	3
4	5	6	7	8	9	10
11	12	13	14	15	16	17
18	19	20	21	22	23	24
25	26	27	28	29	30	31

February 2027						
M	T	W	T	F	S	S
1	2	3	4	5	6	7
8	9	10	11	12	13	14
15	16	17	18	19	20	21
22	23	24	25	26	27	28

March 2027						
M	T	W	T	F	S	S
1	2	3	4	5	6	7
8	9	10	11	12	13	14
15	16	17	18	19	20	21
22	23	24	25	26	27	28
29	30	31				

April 2027						
M	T	W	T	F	S	S
			1	2	3	4
5	6	7	8	9	10	11
12	13	14	15	16	17	18
19	20	21	22	23	24	25
26	27	28	29	30	31	

May 2027						
M	T	W	T	F	S	S
					1	2
3	4	5	6	7	8	9
10	11	12	13	14	15	16
17	18	19	20	21	22	23
24	25	26	27	28	29	30
31						

June 2027						
M	T	W	T	F	S	S
	1	2	3	4	5	6
7	8	9	10	11	12	13
14	15	16	17	18	19	20
21	22	23	24	25	26	27
28	29	30				

July 2027						
M	T	W	T	F	S	S
			1	2	3	4
5	6	7	8	9	10	11
12	13	14	15	16	17	18
19	20	21	22	23	24	25
26	27	28	29	30	31	

August 2027						
M	T	W	T	F	S	S
						1
2	3	4	5	6	7	8
9	10	11	12	13	14	15
16	17	18	19	20	21	22
23	24	25	26	27	28	29
30	31					

Key : White dates - schools open to pupils
 Yellow dates - pupil holiday
 Red dates - bank holiday

Five staff training days (highlighted in blue) are 1st & 2nd September, 23rd October, 4th January and 12th April (EMAT Leadership Conference).

OTHER IMPORTANT DATES FOR YOUR DIARY WILL BE COMMUNICATED THROUGHOUT THE YEAR VIA DOJO, NEWSLETTERS AND THE WEBSITE.