

Year 4 Art: Elements of Art - Value

Vermeer - The Milkmaid



Ground: preparation layer on canvas (paint) or board (gesso)

Underpainting: base layer(s) - to be painted on top of



VALUE

The lightness or darkness of tones or colors.
White is the lightest value; black is the darkest.

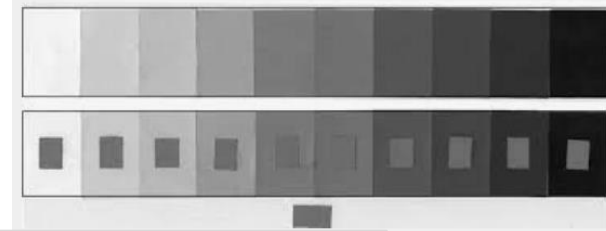


BILL MURPHY

Turner – The fighting Temeraire



Tone: How light or dark



Chiaroscuro: **Light and dark**
Usually one, strong source of light ,
clear **tonal contrast**

Rembrandt- Belshazzar's Feast



Caravaggio - Supper at Emmaus



Form: creating appearance of 3D

