

February 2024

# NEWSLETTER

Nelson  
Academy



Nursery Road, Downham Market,  
Norfolk, PE38 9PF



01366 383 824



office@nla.eastern-mat.co.uk



www.nelsonacademy.co.uk

## Parents Evenings - Next Week

Have you booked yet? All bookings on Pupil Asset website -  
[www.secure.pupilasset.com](http://www.secure.pupilasset.com)

Tuesday 5<sup>th</sup> March 3:30pm to 5:50pm - In school or telephone

Wednesday 6<sup>th</sup> March 3:30pm to 5:50pm - In school or telephone

Aspens Catering will be in school both days so please come and try food from their new menu.

Tech Skills For Life West Norfolk will be in school both days or call them 01485 536420 Monday to Friday 9am-5pm



## Message from the Principal

Dear Parents, Carers and Children,

Welcome to our new look newsletter! I would like to start off by taking this opportunity to thank everyone for their generosity as we raised a whopping £834.80 through our recent NSPCC Number Day, this is just incredible!

Just in case you haven't seen my post on ClassDojo - We have a vacancy for a parent Academy Committee member (Governor). If this is something which you might be interested in and would like to find out more, please do get in touch [sarah.wilson@nla.eastern-mat.co.uk](mailto:sarah.wilson@nla.eastern-mat.co.uk) or catch me for a chat in person.

Hopefully you have noticed in the newsletters and on ClassDojo that we love to celebrate the children's achievements outside of school too. If you have any news to share, please email [office@nla.eastern-mat.co.uk](mailto:office@nla.eastern-mat.co.uk)

Please keep an eye out for dates, we have lots of exciting opportunities coming up including the introduction of 'Curriculum Showcase Afternoons' - We really hope that you can join us for these.

Thank you for your continued support. Best wishes - Mrs Sarah Wilson (Principal)



Sarah Wilson - Principal



We're a proud  
member of the  
EMAT family



Queen Mary Road, King's Lynn,  
Norfolk, PE30 4QG



01553 779 685



[office@eastern-mat.co.uk](mailto:office@eastern-mat.co.uk)



[www.eastern-mat.co.uk](http://www.eastern-mat.co.uk)



Dates  
for your  
March  
diary

Thursday 7<sup>th</sup>  
World Book Day

Monday 18<sup>th</sup>  
Class Photographs

Tuesday 26<sup>th</sup> March  
Autism Acceptance Day

Thursday 28<sup>th</sup> March  
Easter Holiday Begins



We're working  
towards Artsmark  
Awarded by Arts  
Council England



# World Book Day

## Thursday 7<sup>th</sup> March 2024



This year we would like children to come in wearing PJs with a blanket. If they want to dress up as a book character instead, that's fine, but please don't think you have to. The most important thing is that the children bring a book that they really enjoy ready to share with their friends. All pupils will receive a book voucher.

## Comic Relief Red Nose Day!

### Friday 15th March will be Comic Relief Red Nose Day!

We will be selling red noses in school £2 each (available from Monday 11<sup>th</sup> March but when they are gone they are gone!)

As well as this, there will be a raffle (50p a ticket) to win some Red Nose Day goodies... including caps and badges.

We would also like to ask for this year's best jokes to make another Nelson Red Nose Day joke book. Please send your joke/ jokes (with your name and class on) to Mrs.Sek by Monday 4th March. The ones that make us laugh the most will be included in the joke book which can be purchased on Red Nose Day.



## Sporting Stars....

Penny in Reception has recently competed in gymnastics and won a gold medal, 2 silver medals and a bronze medal.

Ivy in Year 4 won 4 silver medals in her gymnastics competition.

Phoebe in Year 6 competed in a Baton competition. She won a certificate for not dropping her baton, came 2nd for her solo routine and 2nd for her poise routine. She's now off to Nationals in May. Good Luck



We're a proud member of the EMAT family



Queen Mary Road, King's Lynn,

Norfolk, PE30 4QG



01553 779 685



office@eastern-mat.co.uk



www.eastern-mat.co.uk

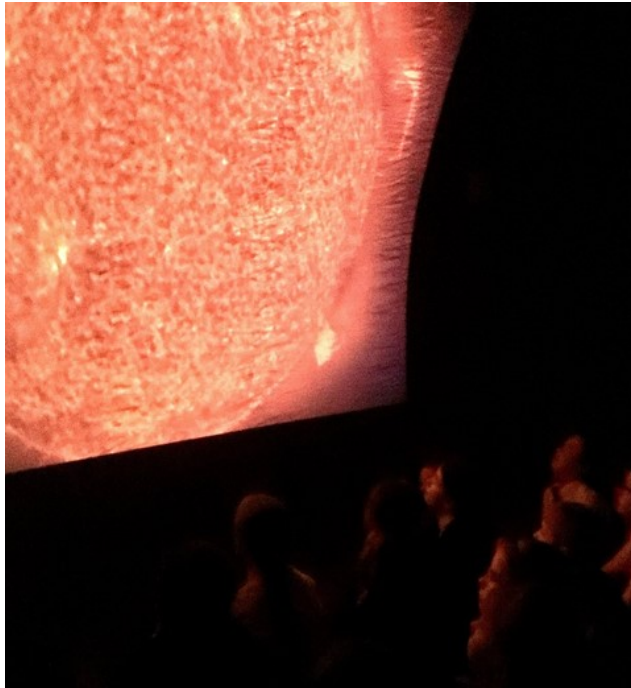


We're working towards Artsmark Awarded by Arts Council England



SCHOOL MEMBER





## Planetarium Visits Nelson

Children in Year 2 and Year 4 were all so amazed by the facts and the wow factor of being under all the constellations during Tuesday's visit from the Planetarium.

Thank you to the Friends of Nelson Academy for supporting us with this incredible experience which really brought the children's learning to life.



## Wraparound Childcare Breakfast & Afterschool Club

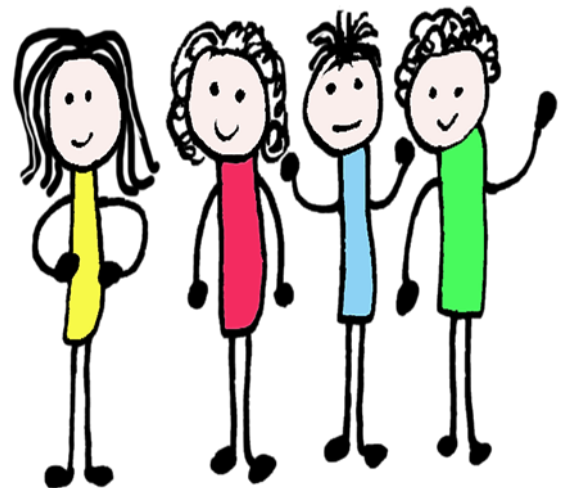
A reminder to everyone that we run before and after school clubs. These should be booked on the Pupil Asset website [www.secure.pupilasset.com](http://www.secure.pupilasset.com)

**Breakfast Club** 7:45am to 8:30am - Cereal, toast or yoghurt and a drink = £4.00 per session.

**Afterschool Club booking deadline is 2:30pm**

**Afterschool Early** - Snack, drink and activities with pick up **promptly** by 4:30pm = £5.00 per session.

**Afterschool Late** - Snack, light hot snack and drink, and activities pick up **promptly** by 6:00pm = £10:00 per session.



We also take Computershare Voucher, Kiddi Vouchers & Sodexo Work Voucher.

**Receipts** can be issued - please request by e mailing the office - [office@nla.eastern-mat.co.uk](mailto:office@nla.eastern-mat.co.uk)



We're a proud member of the EMAT family



Queen Mary Road, King's Lynn,  
Norfolk, PE30 4QG



01553 779 685



[office@eastern-mat.co.uk](mailto:office@eastern-mat.co.uk)



[www.eastern-mat.co.uk](http://www.eastern-mat.co.uk)



We're working towards Artsmark Awarded by Arts Council England



# Curriculum Showcase Afternoons.....

Following conversations with staff and parents/carers we are introducing a termly '**Curriculum Showcase Afternoon**' for each year group. This will be an afternoon each term when parents/carers will be invited into school to see and learn about their child's learning (think a bit like an old fashioned Story Café that we used to have before COVID hit).

Teachers and children will prepare activities for parents/carers to take part in with their child. Children's books will be out for parents/carers to look at with their child, and generally it will be an opportunity for the children to share and show off what they have been doing in school.

**We (staff and children) would absolutely LOVE it if as many parents and carers as possible could join us on these special afternoons.**

## Spring Term Dates

Packham Class – 2pm on Thursday 21<sup>st</sup> March

Rosen Class – 2pm on Thursday 21<sup>st</sup> March

Nursery – 11am-12 & 2pm-3pm on Wednesday 20<sup>th</sup> March

Reception (Anning & Attenborough) – **Star Gazing Evening which took place on 31<sup>st</sup> January - A huge thank you to everyone who attended - Please see photographs below ☺**

Year 1 (Banks & Goodall) – 2.30pm on Wednesday 20<sup>th</sup> March

Year 2 (Boudicca & Cleopatra) - 2.30pm on Thursday 14<sup>th</sup> March

Year 3 (Archimedes & Drake) – 2.30pm on Monday 4<sup>th</sup> March

Year 4 (Cromwell & Wren) – 2.30pm on Tuesday 12<sup>th</sup> March

Year 5 (Hepworth & Tubman) – 2.30pm on Tuesday 26<sup>th</sup> March

Year 6 (Darwin & Fleming) – 2.30pm on Thursday 21<sup>st</sup> March



We're a proud member of the EMAT family



Queen Mary Road, King's Lynn,



01553 779 685



office@eastern-mat.co.uk



www.eastern-mat.co.uk



We're working towards Artsmark Awarded by Arts Council England







We're a proud member of the EMAT family



Queen Mary Road, King's Lynn,

01553 779 685

office@eastern-mat.co.uk

www.eastern-mat.co.uk



We're working towards Artsmark Awarded by Arts Council England



## Life...

Don't miss out because you're not online.

Get free tech and learn new skills to make life easier.

Life's easier when you've got the right tech, the right know-how and the confidence to use computers and smart phones.

- Do you need help with using a computer, tablet or smart phone?
- Are you struggling to pay for mobile data or broadband at home?
- Do your kids need to do homework, but you don't have a laptop or the internet at home?
- Do you worry about staying safe online?

We are here to help.

[www.norfolk.gov.uk/techskillsforlife](http://www.norfolk.gov.uk/techskillsforlife)



## Our friendly Community Tech Coaches are here to help with your technology and internet worries and struggles.

We can:

- Give you the skills and confidence to use your tablet, laptop or smartphone and be safe online
- Help you find out how to borrow a tablet, laptop or smartphone
- Suggest free training, courses and social groups
- Help you get internet access with free data and cheaper broadband tariffs
- Help you learn more skills so you can use apps and computers
- Help you get a tablet, laptop or smartphone to keep for free

### Tech Skills for Life is here for you

Contact a Community Tech Coach for yourself, or for a friend of family member who you think we could help.

Call: 01485 536 420

(Monday to Friday, 9am to 5pm)

Pop into your local library

and ask a Coach to contact you

Email: [techskillsforlife@norfolk.gov.uk](mailto:techskillsforlife@norfolk.gov.uk)

[www.norfolk.gov.uk/techskillsforlife](http://www.norfolk.gov.uk/techskillsforlife)



Tech Skills for Life is a pilot project for Kings Lynn & West Norfolk residents funded by Norfolk County Council, working in partnership with the Borough Council of King's Lynn and West Norfolk, the NHS, and local voluntary & community groups so everyone can have the opportunity to get online with the right technology for them and their family.



Children are using smart devices from a much younger age than ever before. It's why it's essential we talk to our children about how to use them safely. There are so many positive benefits to the new technology at our disposal these days - however there are plenty of downsides too. As a parent, it's important you understand these risks and how you can take steps to protect your family against them.

## 1 PUT YOURSELF IN CONTROL

Make use of the parental control settings available to you. With most devices, you're able to change the settings to control the content your child has access to. This isn't difficult to do, as you'll often find guidance in the instructions that come with the device. By setting a private pin code on certain devices, you can make sure your child can only access it when you allow it.



2

## PROTECTING ANDROID DEVICES



You can set up restricted users on Android tablets through a Google account. Open the settings menu (look for a cog icon) and select the 'Users' option. Here you can add a new restricted user. After setting up a password and username, select which applications you want to restrict access to. On an Android smartphone it's similar, but first select 'Parental Controls' in the play store.

## PROTECTING APPLE DEVICES



For Apple devices, you can simply visit the preferences/settings menu and within 'General' there is an option for 'Restrictions'. Here you can turn off any applications or features on your child's device that you do not want them to have access to.



## 4 THINK ABOUT ALL YOUR SMART DEVICES

As well as tablets and smartphones, you should think about any device in your home connected to the Internet: a games console, a media hub, or a personal computer. In each case you can usually find parental controls in the settings. Think carefully about how much access you want to allow your child, especially when it comes to accessing the Internet.

5

## MAKE SEARCHING MUCH SAFER



Most search engines, such as Google, Bing or Yahoo, have a 'safe search' setting. You should activate this. Otherwise, it's extremely easy for a seemingly harmless search on the Internet to return unexpected and inappropriate results. Depending on the browser you're using, go to the settings and search for 'safe search'. Make sure you save the change so it defaults each time you open the browser. This will seriously reduce the chances of your child being exposed to something they shouldn't be.



# 9 Top Tips To Get Smart About children's devices

6

## REGULARLY CHECK SOCIAL MEDIA SETTINGS



Before you allow your child to use social media, you should discuss the dangers with them. You should also make sure you're able to access their profile and privacy settings and check them regularly. The companies behind social media platforms often make privacy changes without making it very obvious to the user, such as Facebook's introduction of facial recognition software.

7

## DON'T LET PEOPLE SEE WHERE YOU ARE



Location software sounds useful for seeing where your child is, but it also provides the opportunity for others to locate your child too. For safety, it's a good idea to disable location software on all devices or at least turn it off when it's not required. Also, be mindful of specific apps that record running routes or locations where your child might be playing a game. Talk to your child about why these can be dangerous and how to turn the setting on and off as required.

## WATCH OUT FOR FAKE PROFILES

Sadly, social media presents an enormous opportunity for the likes of paedophiles to set up fake profiles and interact with children. Keep a track of the people your child interacts with on social media and if you do not recognise a user as a friend, consider blocking them.



## KEEP A CHECK ON SCREEN TIME

Managing how much time we spend on screens is a new challenge for us all. It's critically important when it comes to children, especially younger children who are still developing. It's not just a case of setting arbitrary time limits. Guidelines published by The Royal College of Paediatrics and Child Health suggests it's more important to consider the 'context and content' of what the screen is being used for. Still, it is helpful to put limits on devices using 'Goldilocks' functions, which you can find in the settings of certain devices.



## Meet our expert

Emma Davis was a secondary school Computer Science teacher for more than decade. Since leaving education, she has been working in a cyber security firm delivering cyber awareness training to businesses and carrying out network testing. She is a mother of a five-year-old, she's had vast experience of controlling and managing how children access online services and use apps.



[www.nationalonlinesafety.com](http://www.nationalonlinesafety.com)

Twitter - @natonlinesafety

Facebook - /NationalOnlineSafety

Users of this guide do so at their own discretion. No liability is entered into. Current as of the date of release: 10.04.2019



We're a proud member of the EMAT family



Queen Mary Road, King's Lynn,



01553 779 685



office@eastern-mat.co.uk



[www.eastern-mat.co.uk](http://www.eastern-mat.co.uk)

Norfolk, PE30 4QG



We're working towards Artsmark Awarded by Arts Council England





We're a proud member of the EMAT family



Queen Mary Road, King's Lynn,



01553 779 685



office@eastern-mat.co.uk



www.eastern-mat.co.uk



We're working towards Artsmark Awarded by Arts Council England



SCHOOL MEMBER



Our school has a TEACHER Ambassador



# 2023-2024



Eastern Multi-Academy Trust  
Empower - Motivate - Aspire - Transform

September 2023						
M	T	W	T	F	S	S
				1	2	3
4	5	6	7	8	9	10
11	12	13	14	15	16	17
18	19	20	21	22	23	24
25	26	27	28	29	30	

October 2023						
M	T	W	T	F	S	S
						1
2	3	4	5	6	7	8
9	10	11	12	13	14	15
16	17	18	19	20	21	22
23	24	25	26	27	28	29
30	31					

November 2023						
M	T	W	T	F	S	S
		1	2	3	4	5
6	7	8	9	10	11	12
13	14	15	16	17	18	19
20	21	22	23	24	25	26
27	28	29	30			

December 2023						
M	T	W	T	F	S	S
				1	2	3
4	5	6	7	8	9	10
11	12	13	14	15	16	17
18	19	20	21	22	23	24
25	26	27	28	29	30	31

January 2024						
M	T	W	T	F	S	S
1	2	3	4	5	6	7
8	9	10	11	12	13	14
15	16	17	18	19	20	21
22	23	24	25	26	27	28
29	30	31				

February 2024						
M	T	W	T	F	S	S
			1	2	3	4
5	6	7	8	9	10	11
12	13	14	15	16	17	18
19	20	21	22	23	24	25
26	27	28	29			

March 2024						
M	T	W	T	F	S	S
				1	2	3
4	5	6	7	8	9	10
11	12	13	14	15	16	17
18	19	20	21	22	23	24
25	26	27	28	29	30	31

April 2024						
M	T	W	T	F	S	S
1	2	3	4	5	6	7
8	9	10	11	12	13	14
15	16	17	18	19	20	21
22	23	24	25	26	27	28
29	30					

May 2024						
M	T	W	T	F	S	S
		1	2	3	4	5
6	7	8	9	10	11	12
13	14	15	16	17	18	19
20	21	22	23	24	25	26
27	28	29	30	31		

June 2024						
M	T	W	T	F	S	S
					1	2
3	4	5	6	7	8	9
10	11	12	13	14	15	16
17	18	19	20	21	22	23
24	25	26	27	28	29	30

July 2024						
M	T	W	T	F	S	S
1	2	3	4	5	6	7
8	9	10	11	12	13	14
15	16	17	18	19	20	21
22	23	24	25	26	27	28
29	30	31				

August 2024						
M	T	W	T	F	S	S
			1	2	3	4
5	6	7	8	9	10	11
12	13	14	15	16	17	18
19	20	21	22	23	24	25
26	27	28	29	30	31	

Key : While dates - schools open to pupils  
Yellow dates - pupil holiday  
Red dates - bank holiday

The five staff training days (highlighted in blue) are: Monday 4<sup>th</sup> September, Tuesday 5<sup>th</sup> September, Wednesday 3<sup>rd</sup> January, Thursday 28<sup>th</sup> March and Monday 22<sup>nd</sup> July.